



GCT USA

Meeting with

NY/NJ Foreign Freight Forwarders
Association

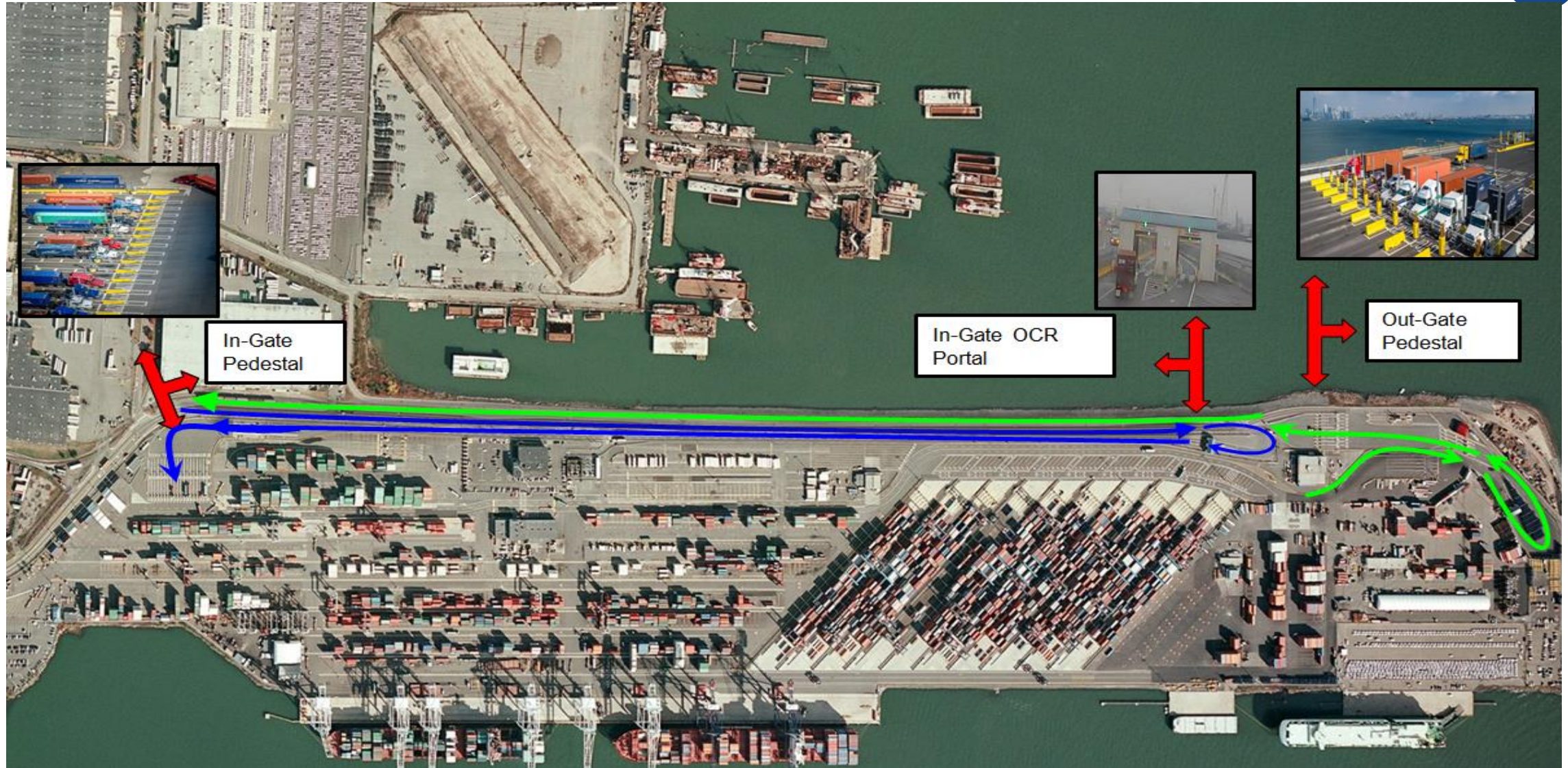
October 27, 2022



Agenda

- Terminal Overview GCTNY-GCTBY
- Market Conditions
- Group Dispatch
- Empty Returns
- Information Sharing
- Open Discussion

GCT Bayonne Current Build



GCT Bayonne Capacity Expansion



Relocating Power Shop/Roadability (2023/2024)

- Current shop in middle of container yard.
- Move to the west end of the container yard to expand capacity
- About 3 acres

Relocating Reefer M&R (2022/2023)

- Move to East End M&R area
- About 2 acres

Removal of Bldg Maint Bldg (Q4 22)

- Remove building and dedicate to new mty storage
- About 5 acres

All projects will result in approx. 10 additional acres



GCT Bayonne Capacity Expansion



Relocating Power Shop/Roadability (2023/2024)

- Current shop in middle of container yard.
- Move to the west end of the container yard to expand capacity
- About 3 acres

Relocating Reefer M&R (2022/2023)

- Move to East End M&R area
- About 2 acres

Removal of Bldg Maint Bldg (Q4 22)

- Remove building and dedicate to new mty storage
- About 5 acres

All projects will result in approx. 10 additional acres



GCT Bayonne – Future Build



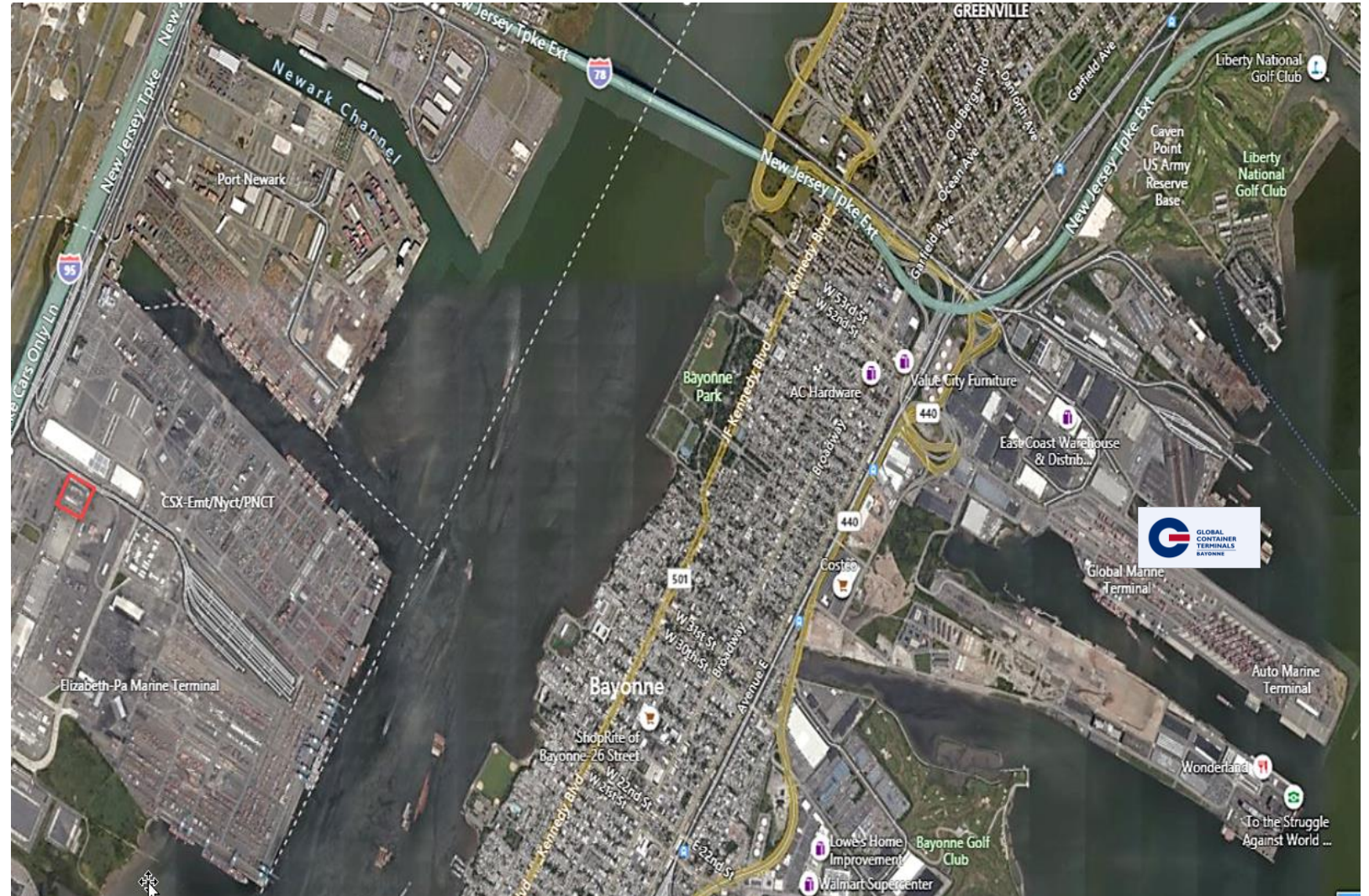
CCS Off-Site Depot



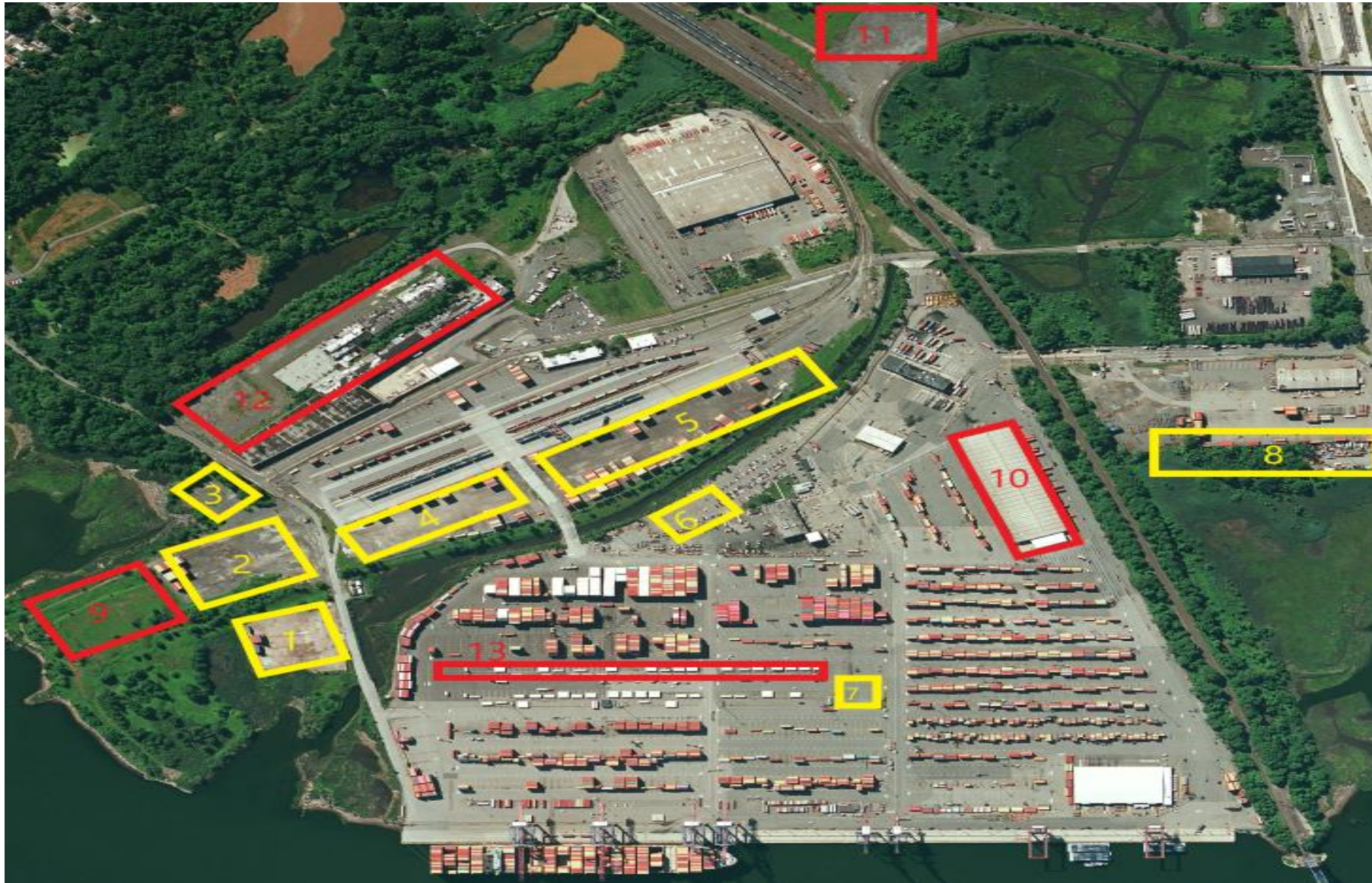
GCT collaborates with Columbia Container Services for the use of empty container storage space within CCS Depot as a partial solution to our ocean carrier's needs for additional empty space.

- approx. 5,000 teu of space
- 12 miles from terminal
- Inner harbor location for ease of use (1155 Polaris Street, Elizabeth)
- Hours of Operation 0800-1600 M-F

Depot has been 95% utilized through early October -



GCTNY Expansion Update



Completed:

- (7) Chassis Change
- (6) Parking Lot
- (4) Rail gravel lot
- (1,2,3) Parcel C
- (8) M&R empty storage area
- (5) Rail gravel lot
- 3 new Top Loaders – (Q2 22)

In Progress:

- (10) LCL Wrhs removal (Q3 22)
- 5 x Top loaders & 3 x Empty handlers for (Q4 22)
- (11) Arlington Yard

Advancing:

- (12) Parcel B (22)
- Reefer Warehouse demo (23)
- Crane heightening/ extension – (23)

Delayed:

- (9) Parcel C

(Will result in approx. 20 additional acres)

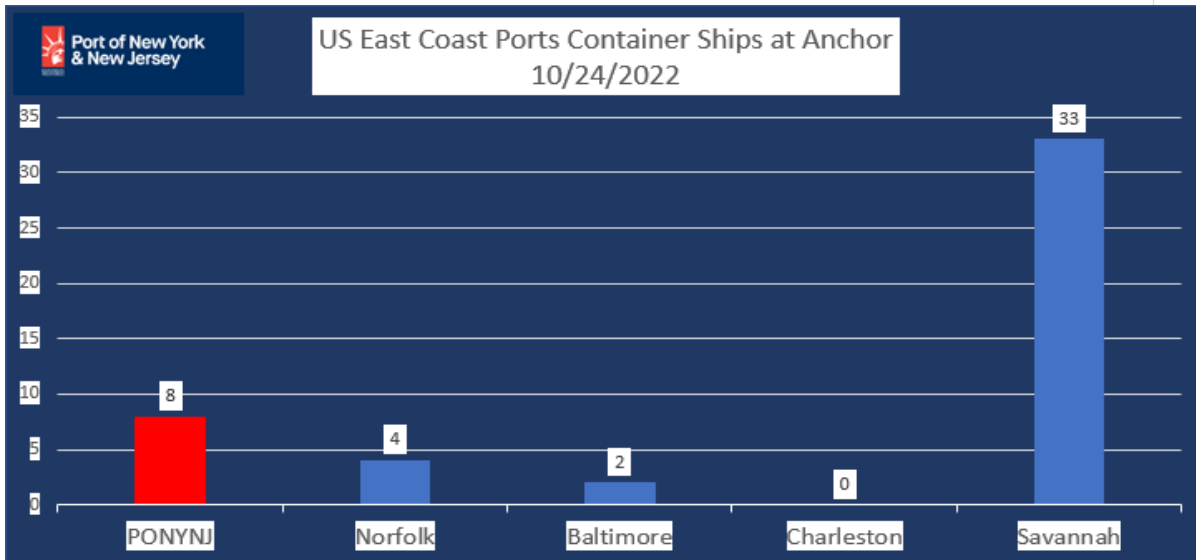
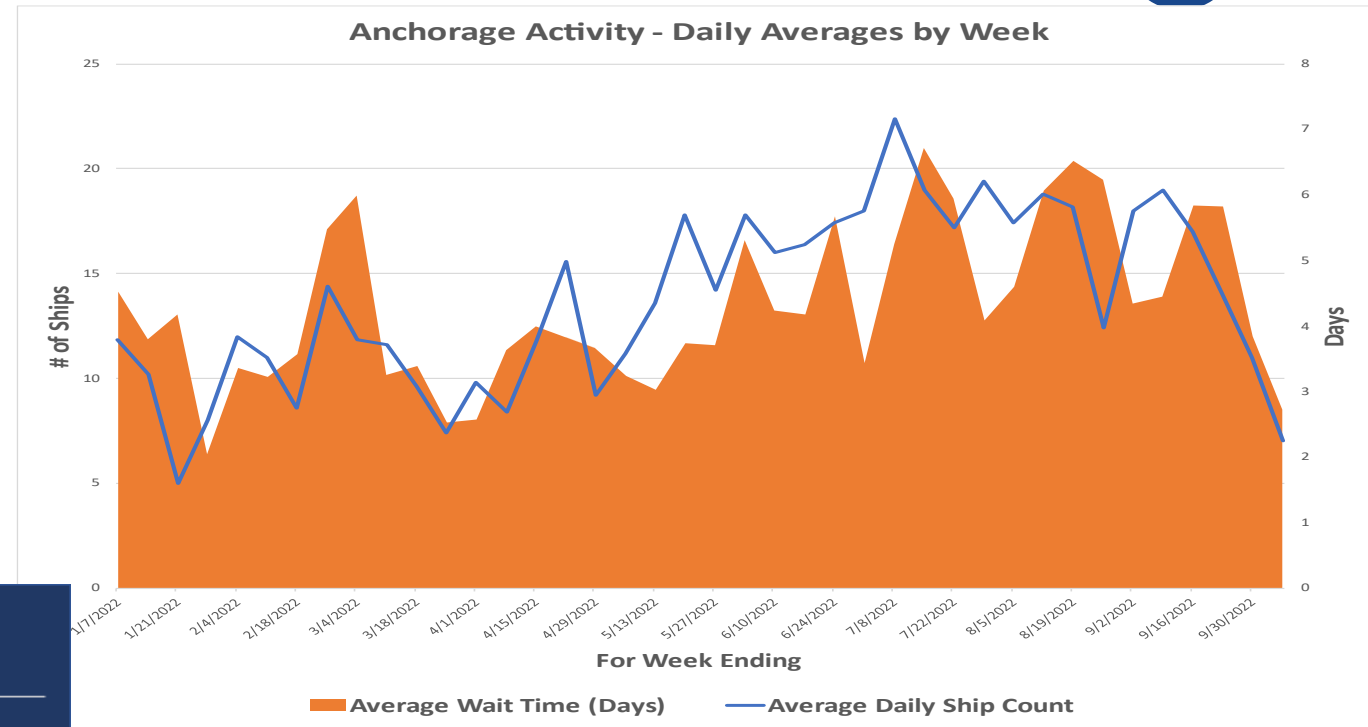
Market Conditions



Ships At Anchor

NY 8 ships
avg waiting time < 5 days

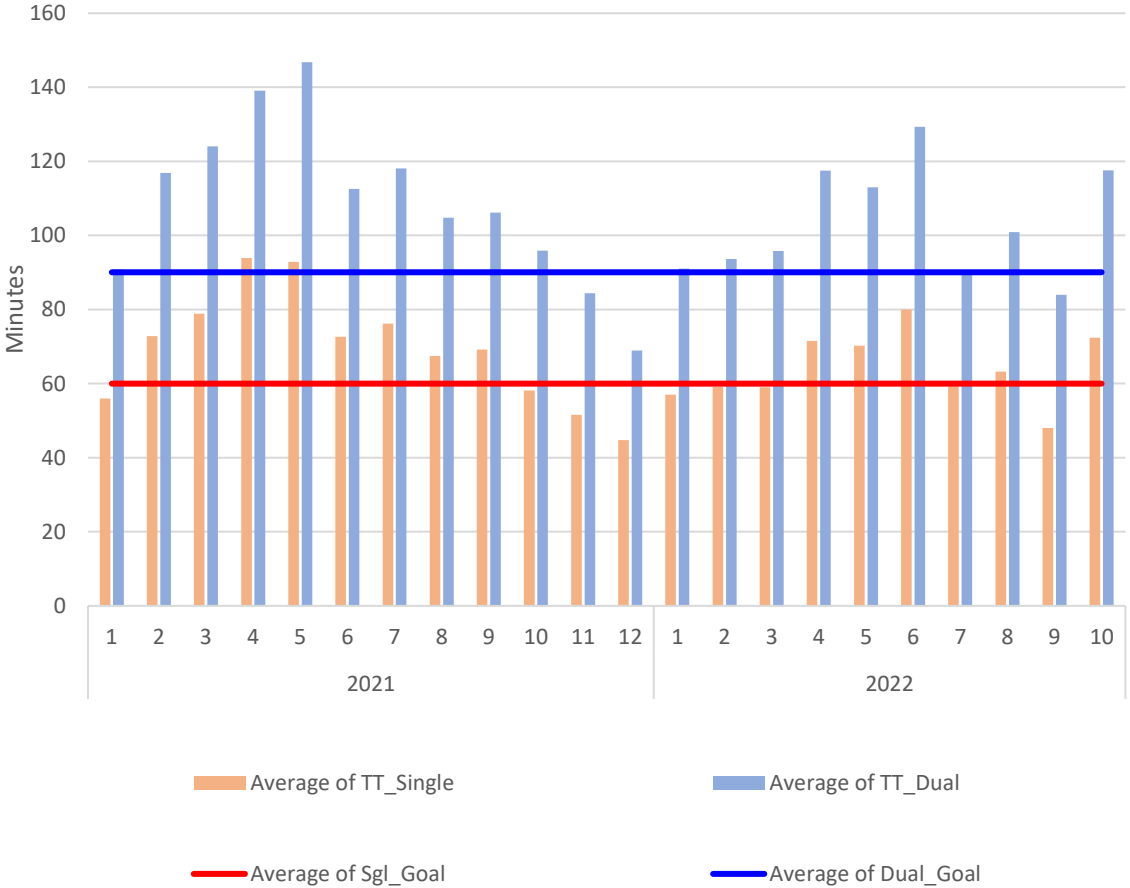
No ships waiting for Bayonne
or New York



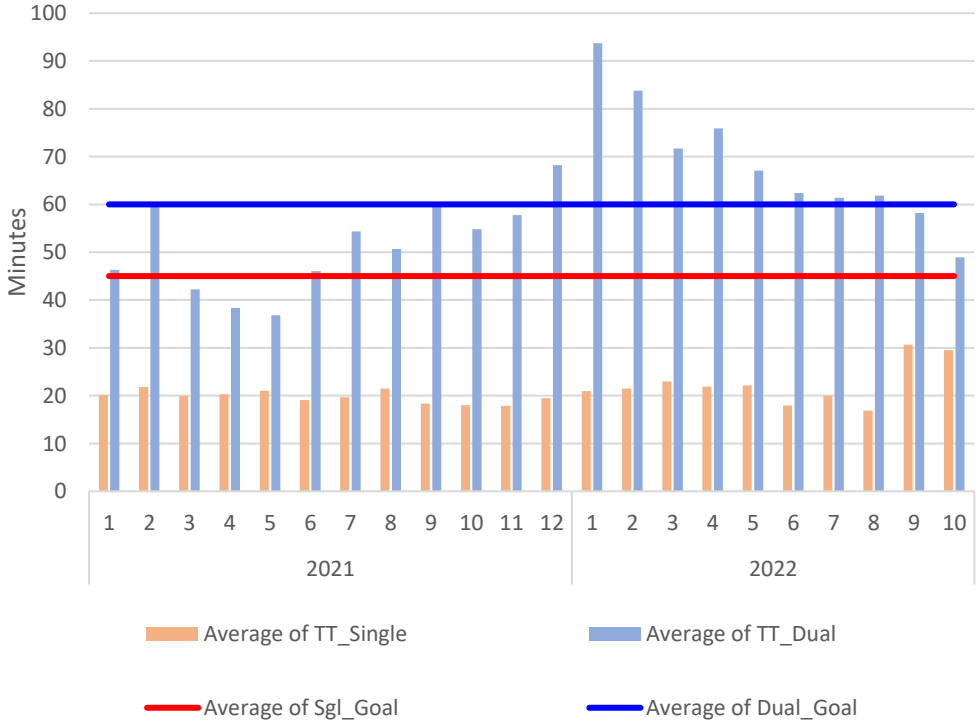
Truck Turn-Time



GCT Bayonne



GCT New York



Group Dispatch



Group Dispatch is similar to a 'Peel Pile'.

The Customer or Trucker advises GCT prior to a vessel working what unit numbers they could accept in bulk form.

- There is no set minimum, but we typically have a goal of 80+ units
- GCT pre-plans the imports off the vessel into the yard
- Truckers select a specific day for pick-up and make appointments using the group code rather than the container #.
- Drivers with the group code are assigned to the yard area and are delivered the most accessible container in the pile.

The Program has been active in Bayonne for more than a year with very good success. We are now offering this service in NY as well.

- Truck turn times for containers moved within the program are typically between 25-50% lower than the days average turn-time.
- The dedicated labor for sorting and delivery requires a \$150 per unit cost recovery fee.
- Major benefit to customers is a reduction in exposure to demurrage costs.



GCT Bayonne Empty Receiving



Sample daily email advisory

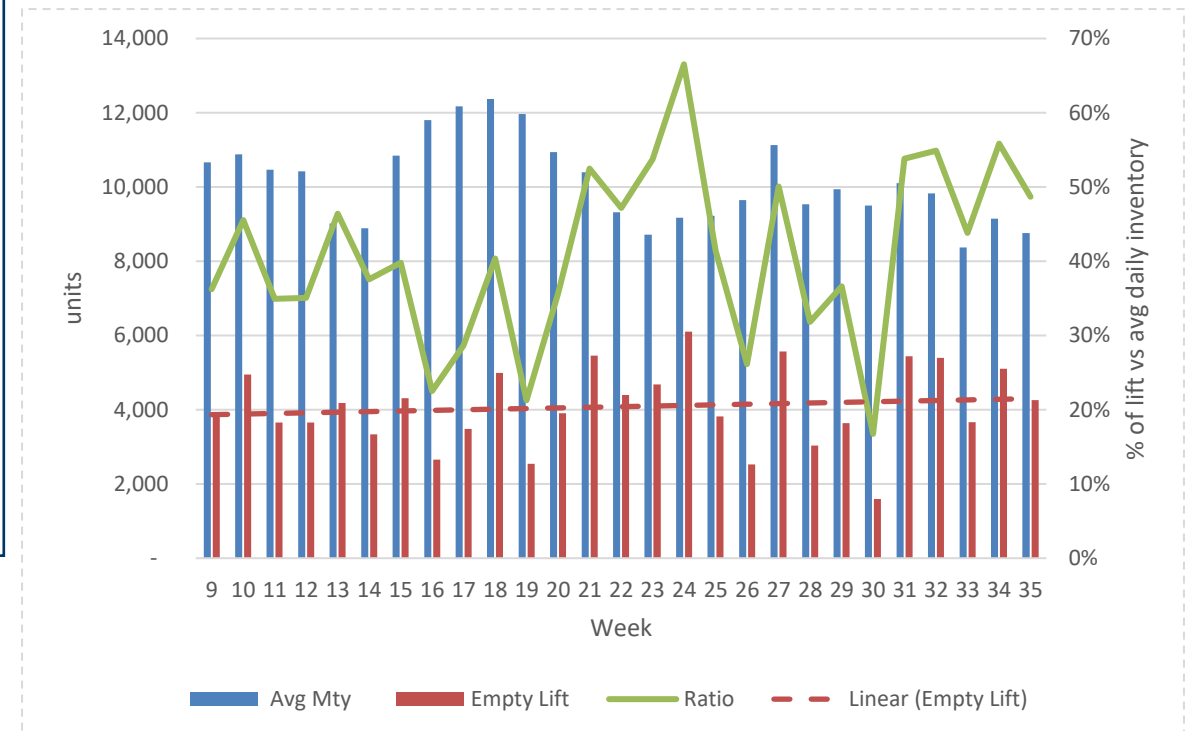
Restricted Empties

Date: 9/21/2022	
HLC	20OT / 20RF / 40OT / 40RQ
HMM	(40HQ @ 1 PM)
ONE	No Restrictions
YML	(40HQ @ 1 PM)

As of Monday, July 25th, GCT Bayonne has added new procedures for empty receiving. After 1300 each day, GCT Bayonne may only accept empty container returns on a double move basis for unrestricted lines. In these cases, all truck transactions after 1300 will need to have an import pickup mission when dropping off empty containers. The Line or the Container type do not have to be the same, the transaction just has to be on a double move basis. This new double move procedure is for empty returns only, and available imports are never restricted from being picked up. Please pay close attention to the empty return instructions under the “TIPS” tab on the Port Truck Pass website.

Double move requirement

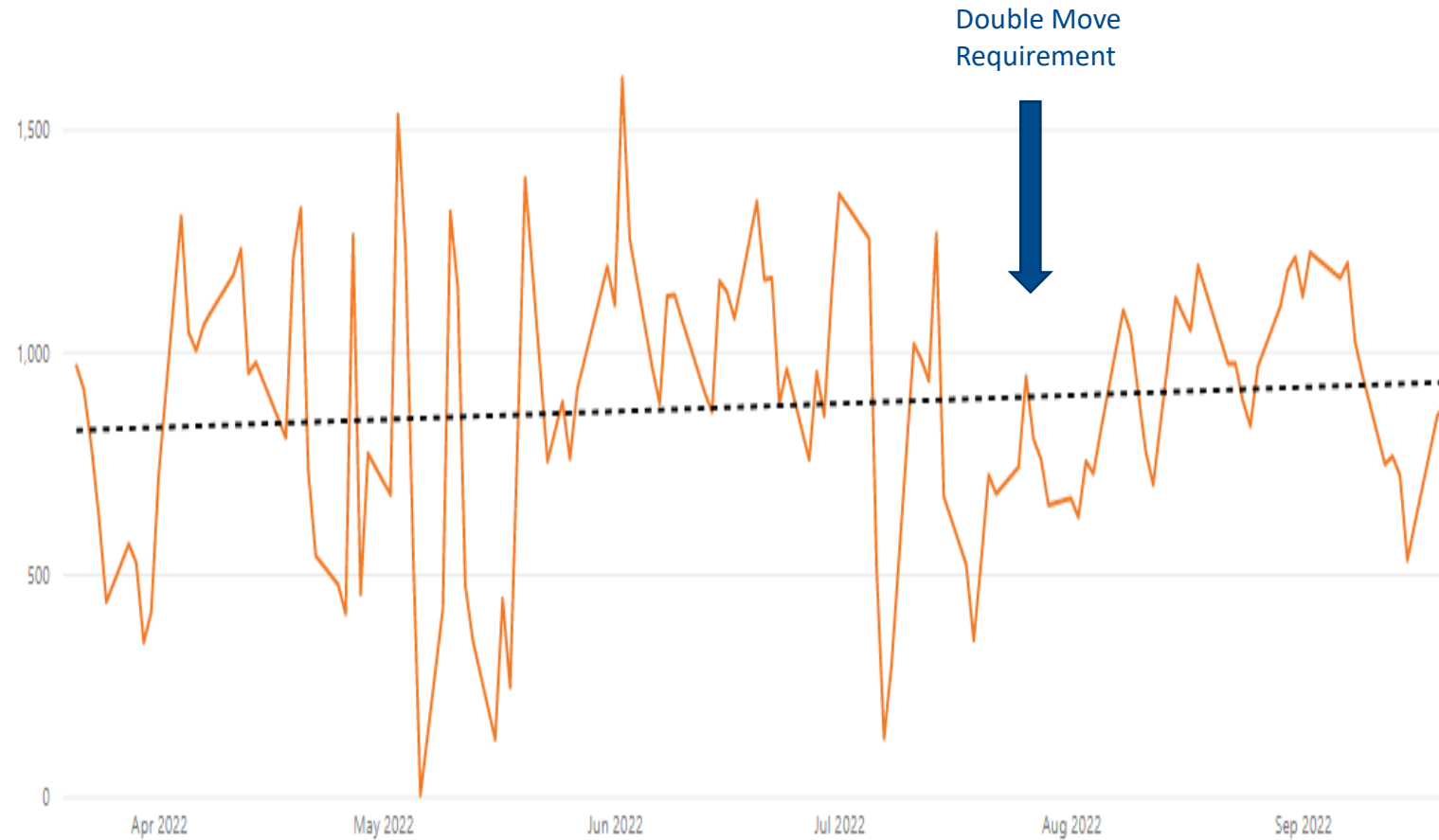
- Implemented in July 2022.
- Allows us to control the number of empty units returned and maintain balance.
- The result has been less fully restricted days.
- GCTBY has increased empty receiving by 5.6%



GCT Bayonne – Empty Receiving



Avg Empty by Dt



- Double move requirement implemented end of July
- 5.5% Increase of empty receiving since that period
- Double move requirement stopped end of Sept

GCT New York Empty Receiving



Sample daily email advisory

Restricted Empties

Date: 9/21/2022

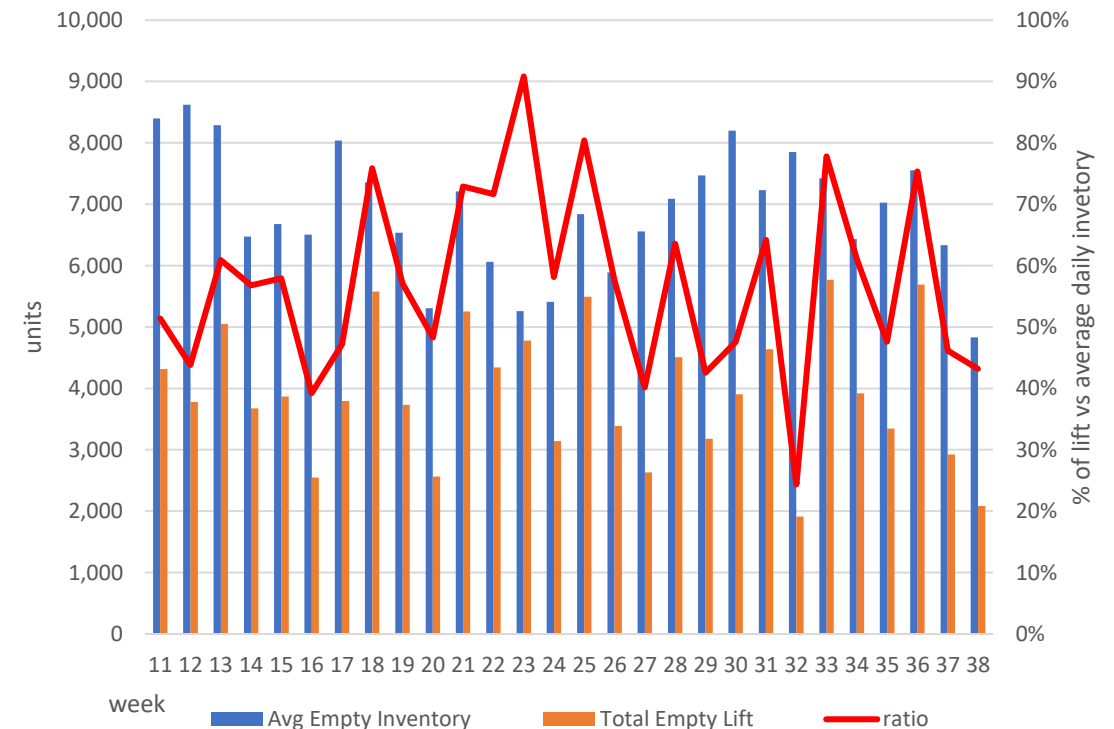
HLC	RESTRICTED
ACL/GMG	RESTRICTED
MSC	NO RESTRICTION
WHL	DOUBLE MOVES ONLY

****Double move restriction is for empty returns only. Available Imports are never restricted from being picked up****

**** Please check GCTNY website for Empty acceptance list ****

Double move requirement

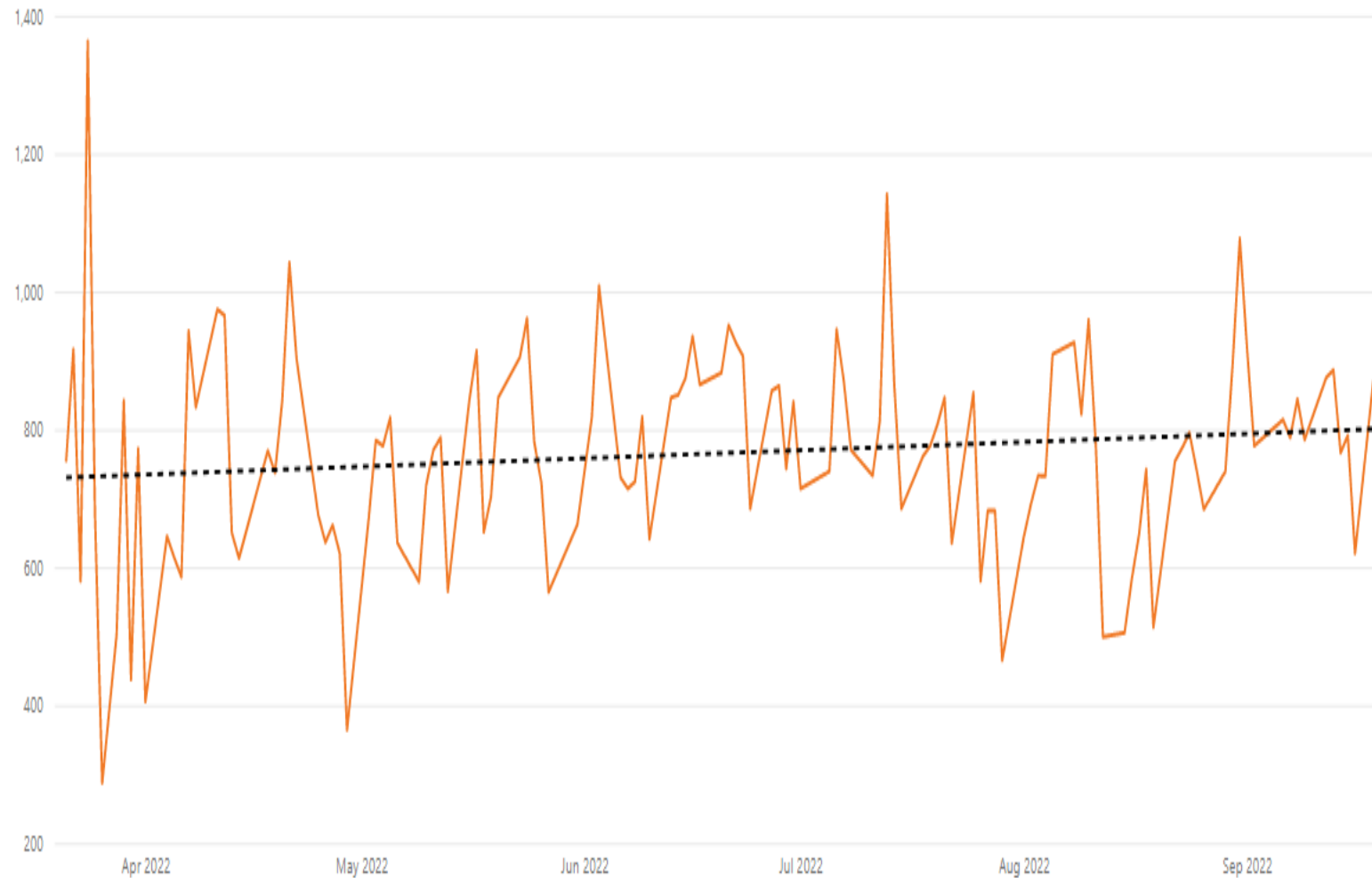
- Implemented in March 2022.
- Allows us to control the number of empty units returned and maintain balance.
- The result has been less fully restricted days.
- GCTNY has increased empty receiving by 10%



GCT New York– Empty Receiving



Avg Empty NY by Dt



- Double move requirement implemented March
- 10% Increase of empty receiving since that period

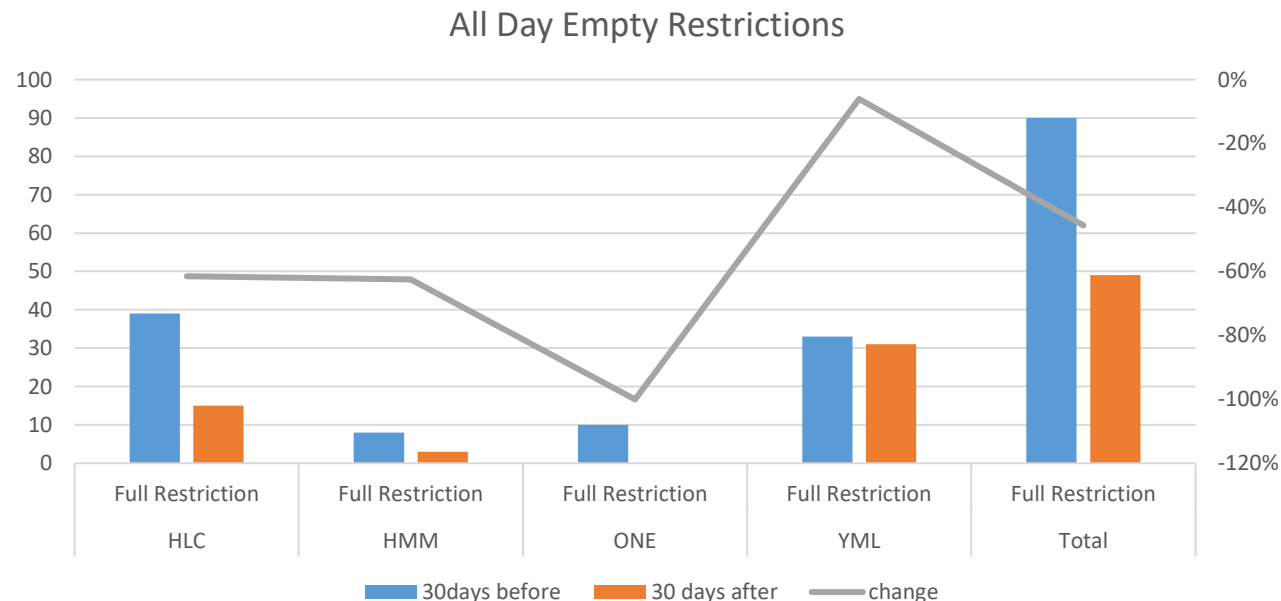
GCT Bayonne Empty Receiving- Full Day Restrictions



Double move requirement went into place July 25th

- The idea was with double move requirements after 1 pm we would be able to reduce the days when we have full restrictions to each Ocean Carrier.
- We did a study looking at 30 days before the DM requirement vs 30 days after.

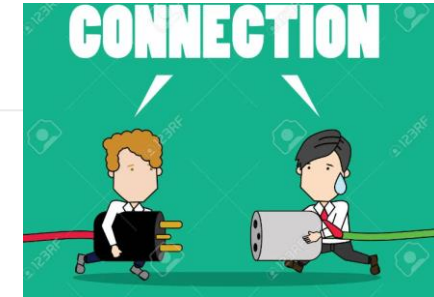
Line	Ful/1pm	30days before	30 days after	change
HLC	Full Restriction	39	15	-62%
HMM	Full Restriction	8	3	-63%
ONE	Full Restriction	10	0	-100%
YML	Full Restriction	33	31	-6%
Total	Full Restriction	90	49	-46%



Findings

- ONE/HMM/HLC all had significantly less all day restrictions after the DM procedure was put into place.
- YML has been the line with issues prior to/with the DM in place
- Overall a 46% reduction in full restriction days

Information Sharing



- GCT Bayonne Availability Portal will soon be taken down. All availability information for GCT NY or BY will be through Port Truck Pass.



- Changing from EDI to API

- Connectivity through Advent

<https://www.adventemodal.com/eds.html>

A screenshot of a web browser displaying the GCT Bayonne LP website. The browser's address bar shows 'payments.gcterminals.com/GlobalTerminal/globalSearch.do'. The website has a blue header with 'GCT Bayonne LP'. Below the header, a large blue text message reads: 'PLEASE BE ADVISED THIS WEBSITE WILL SOON BE UNAVAILABLE. AVAILABILITY INFORMATION FOR GCT BAYONNE AND GCT NEW YORK IMPORT CAN BE FOUND AT [HTTPS://WWW.PORTTRUCKPASS.COM](https://www.porttruckpass.com)'. At the bottom, there is a search form with a text input field labeled 'Enter Your ID:', a dropdown menu labeled 'Search: Container #', and a 'Search' button. A small note next to the ID field says: 'Please be advised that our website has changed. For those who do not have a 5 letter "short code", please enter the code BGL0B as your ID.' Below the dropdown menu, it says 'Enter up to 20 container numbers (one per line)'.

Port Truck Pass Empty Receiving

Reference Only



porttruckpassavailability.emodal.com/ViewEmptyReturnInst

PTP PORT TRUCK PASS

EMPTY RETURN INSTRUCTIONS

Port: Port of NYNJ

Date: 06/13/2022

Hover your cursor over the Terminal to see their Shift Definitions.

Line : HLC

	20' RF	40' RF	HANGER EQP	20' STD	40' STD	40' HC	45' HC	20' SPECIAL EQP	40' SPECIAL EQP	NOTES
Terminal	1st Shift	1st Shift	1st Shift	1st Shift	1st Shift	1st Shift	1st Shift	1st Shift	1st Shift	
GCTB	CLOSED	CLOSED	OPEN	CLOSED	CLOSED	CLOSED	OPEN	CLOSED	CLOSED	

Line : HYU

Line : ONE

Line : YML

Port Truck Pass Portal

- Shows empty receiving for each terminal
- Archive for older activity

Port: Port of NYNJ

Date: 09/20/2022

Hover your cursor over the Terminal to see their Shift Definitions.

Line : ACL

Line : GMG

Line : HLC

	HANGER EQP	20' STD	20' RF	40' RF	40' STD	40' HC	45' HC	20' SPECIAL EQP	40' SPECIAL EQP	*SPECIAL EQP	NOTES
Terminal	1st Shift	1st Shift	1st Shift	1st Shift	1st Shift	1st Shift	1st Shift	1st Shift	1st Shift	1st Shift	
GCTB	OPEN	OPEN	CLOSED	CLOSED	OPEN	OPEN	OPEN	CLOSED	CLOSED	NA	EMPTY'S RETURNED AFTER 1PM REQUIRE A DOUBLE MOVE.
GCTN	CLOSED	CLOSED	CLOSED	CLOSED	CLOSED	CLOSED	CLOSED	CLOSED	CLOSED	CLOSED	

Port Truck Pass Empty Receiving

Reference Only



As of 7:30 AM today, please note our remaining appointment availability for the following locations/move types for Wed, September 21st.

MOVE TYPE / LOCATION	6AM	7AM	8AM	9am	10am	11am	12pm
7A IMPORT PICKUPS			●	●	●	●	●
8A IMPORT PICKUPS			●	●	●	●	●
9A IMPORT PICKUPS		●	●	●	●	●	●
10A IMPORT PICKUPS		●	●	●	●	●	●
11A IMPORT PICKUPS			●	●	●	●	●
12A IMPORT PICKUPS			●	●	●	●	●
13A IMPORT PICKUPS		●	●	●	●	●	●
14A IMPORT PICKUPS			●	●	●	●	●
15A IMPORT PICKUPS			●	●	●	●	●
16A IMPORT PICKUPS			●	●	●	●	●
IMPORT PICKUPS IN B...LOC	●	●	●	●	●	●	●
IMPORT PICKUPS IN C...LOC	●	●	●	●	●	●	●
IMPORT PICKUPS IN D...LOC	●	●	●	●	●	●	●
IMPORT PICKUPS E...LOC	●	●	●	●	●	●	●
EXPORTS IN							
EMPTY OUT		●	●	●	●	●	●
HLCU EMPTY IN		●	●	●	●	●	●
YMLU EMPTY IN							
HDMU EMPTY IN							
ONEY EMPTY IN							

- Please remember to **CANCEL** any unused appointment before the booked timeslot expires. Consider how **MISSED** appointments affect the terminal's capacity as well as other motor carriers from possibly obtaining appointments they could use. Please note that **MISSED** appointments are recorded and monitored on a weekly basis.
- Please check container availability and details by using the TIPS Container "Watchlist" tab on the PortTruckPass website
- Please note appointments are required at GCT Bayonne between 6am-1pm. Appointments are not required from 1pm-4pm.
- Our gate operates from 6am-4pm daily with the following cutoffs
 - Reefer receiving/delivery is 6am-3pm
 - Double move cutoff is 4pm
 - OOG cargo is handled between 8am-3pm
- Please note that GCT Bayonne posts empty return restrictions on the PortTruckPass website 2 days in advance. This can be found under the **TIPS** tab under**Empty Return Instruction**

KEY:



Limited Availability



Available

OSRA Invoice Requirements



CONTENTS OF INVOICE.—An invoice under subsection (a)(15), unless otherwise determined by subsequent Commission rulemaking, shall include accurate information on each of the following, as well as minimum information as determined by the Commission:

“(A) Date that container is made available.

“(B) The port of discharge.

“(C) The container number or numbers.

“(D) For exported shipments, the earliest return date.

“(E) The allowed free time in days.

“(F) The start date of free time.

“(G) The end date of free time.

“(H) The applicable detention or demurrage rule on which the daily rate is based.

“(I) The applicable rate or rates per the applicable rule.

“(J) The total amount due.

“(K) The email, telephone number, or other appropriate contact information for questions or requests for mitigation of fees.

“(L) A statement that the charges are consistent with any of Federal Maritime Commission rules with respect to detention and demurrage.

“(M) A statement that the common carrier’s performance did not cause or contribute to the underlying invoiced charges.

Approval Confirmation for
Container Number SEGU5680110*

Payment Details				
Method	Amount	Shipper Fee	Finance Fee	Total
Advance Payment	\$1,354.00	\$3.00	\$0.00	\$1,357.00

C

A

Paycargo Ld

11230189

E

Type

Container Number

J

Container #

SEGU5680110*

G

Vendor/Biller

GCT Bayonne LP (Global Container)

I

Payer

DSV Air and Sea, Inc.

H

Direction

Inbound

F

Payment Date

07/05/2022

B

Has Arrived

Yes

D

Status

Approved

A

Approval Date

06/28/2022 4:18 PM EDT

K

Description

STORAGE

L

Total Amount

\$1,354.00

A

Available Date:

07/04/22

B

Port of Discharge:

BAY

E

Allowed free time (days):

4

F

Start Date of free time:

07/04/22

G

End Date of free time:

07/08/22

Transaction Lines				
Description	Qty	U/Price	Amount	Applicable D/D rule:
Tier 11-4 Days	1	\$0.00	\$688.00	Hapag Lloyd Import Demurrage Rule - NY
Tier 2 5-9 Days	2	\$0.00	\$666.00	Hapag Lloyd Import Demurrage Rule - NY

K,L,M

- As required by the ocean shipping reform act of 2022, pub. law no. 117-146, the ocean carrier associated with the subject container(s) has stated that (1) its demurrage charges against such container(s) are consistent with the rules of the federal maritime commission with respect to demurrage, and (2) its performance did not cause or otherwise contribute to such demurrage charges.
- Manual updates of last date of free time are made to reflect adjustments agreed to by the trucker, shipper, Marine Terminal or ocean carrier and may not reflect the tariff allowed free days.



Open Discussion



Thank you for your business!